

POWER READY LOAD CENTER AND TRANSFER SWITCH

DESCRIPTION

The Power Ready load center is a hybrid panel that operates as a normal load center and also allows for seamless integration of standby generators.

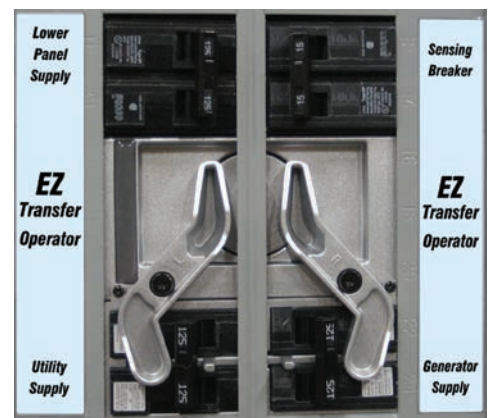
POWER READY™ LOAD CENTER FEATURES

- 40 circuit capacity with the use of tandem breakers
- Dimensions are the same as a standard 42-space main load center
- Utilizes standard Siemens components
- Protect up to 18 circuits, up to 30 with the use of tandem breakers
- 10 circuits available for non-protected loads
- Circuits can easily be shifted from protected to non-protected and vice versa
- UL listed and service entrance rated
- Models available with or without EZ Transfer operator factory installed
- Single panels are compatible with generators rated up to 125 Amps/30 kW
- Multiple Power Ready load centers can be supported with a single generator
- Flush Mount NEMA 1 Enclosure



EZ TRANSFER™ OPERATOR FEATURES

- Factory installed on the Power Ready Advanced model. Can be easily installed in the field on the Power Ready Basic with available kit
- Allows for manual or automatic operation



PRODUCT OPTIONS

Power Ready Load Center and Transfer Switch

Power Ready Basic Load Center
Model Number KGATX0101RSP
(order through SAP)



Includes:

- 125A Circuit Breaker
- 125A Lower Panel Circuit Switch
- 200A Main Circuit Breaker

Power Ready Advanced Load Center
with EZ Transfer™ Operator
Model Number KGATD0101RSP
(order through SAP)



Includes Power Ready Basic plus:

- EZ Transfer™ Operator
- 125A Lower Panel, Generator Circuit Switch
- 15A Double Pole Breaker for Sensing Circuit

EZ Transfer Operator
Field Installation Kit
Model Number 5450
(order through RCD)

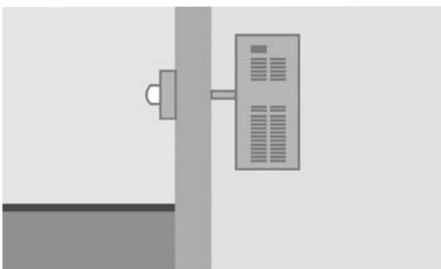


Transfer Operator Field Installation Kit
Includes:

- Transfer Operator
- 15A Double Pole Breaker for Generator Sensing Circuit
- 125A Lower Panel, Generator Circuit Switch
- Hold Down Bracket
- Interlock Bar
- Mounting Hardware
- Decals
- Installation Guide

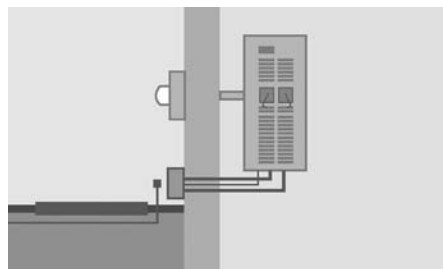
INSTALLATION OPTIONS

Power Ready Basic



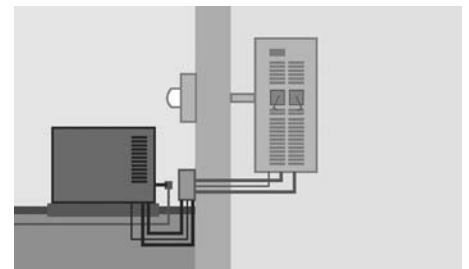
The Power Ready load center is installed without the EZ Transfer operator. It replaces the home's main load center. This option will save the homeowner thousands in upgrade costs when a generator is installed.

Power Ready Advanced



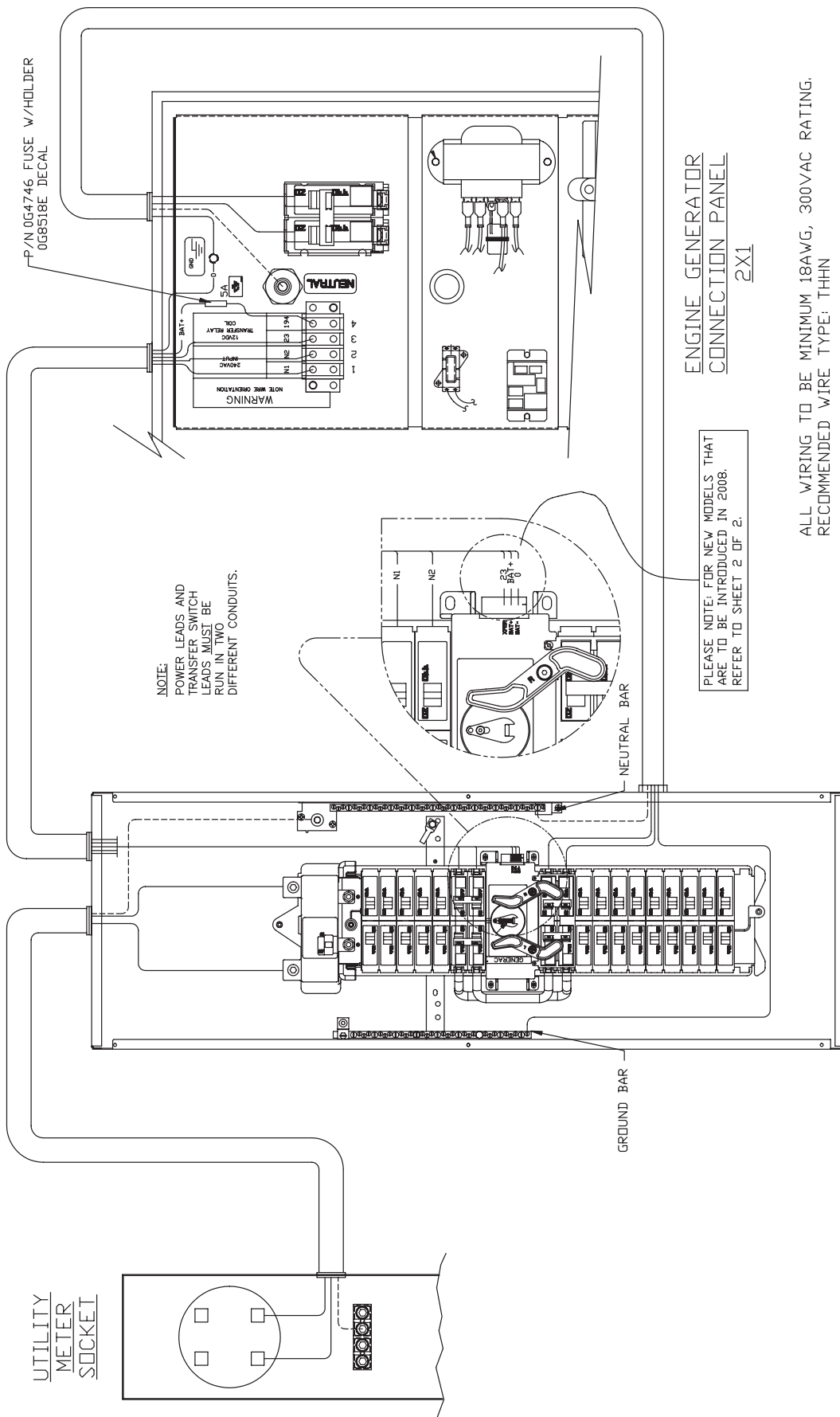
The Power Ready load center is installed with the EZ Transfer operator. All fuel and electrical lines (contractor supplied) are installed to the planned generator site along with the generator pad (if required). The home is completely wired and ready for the addition of a generator in the future.

Power Ready Complete



Everything included in the Power Ready Advanced level is installed along with an automatic standby generator. The home's selected circuits will be backed up by generator power whenever the utility is lost.

INTERCONNECTIONS



ENGINE GENERATOR
CONNECTION PANEL
2X1

ALL WIRING TO BE MINIMUM 18AWG, 300VAC RATING.
RECOMMENDED WIRE TYPE: THHN

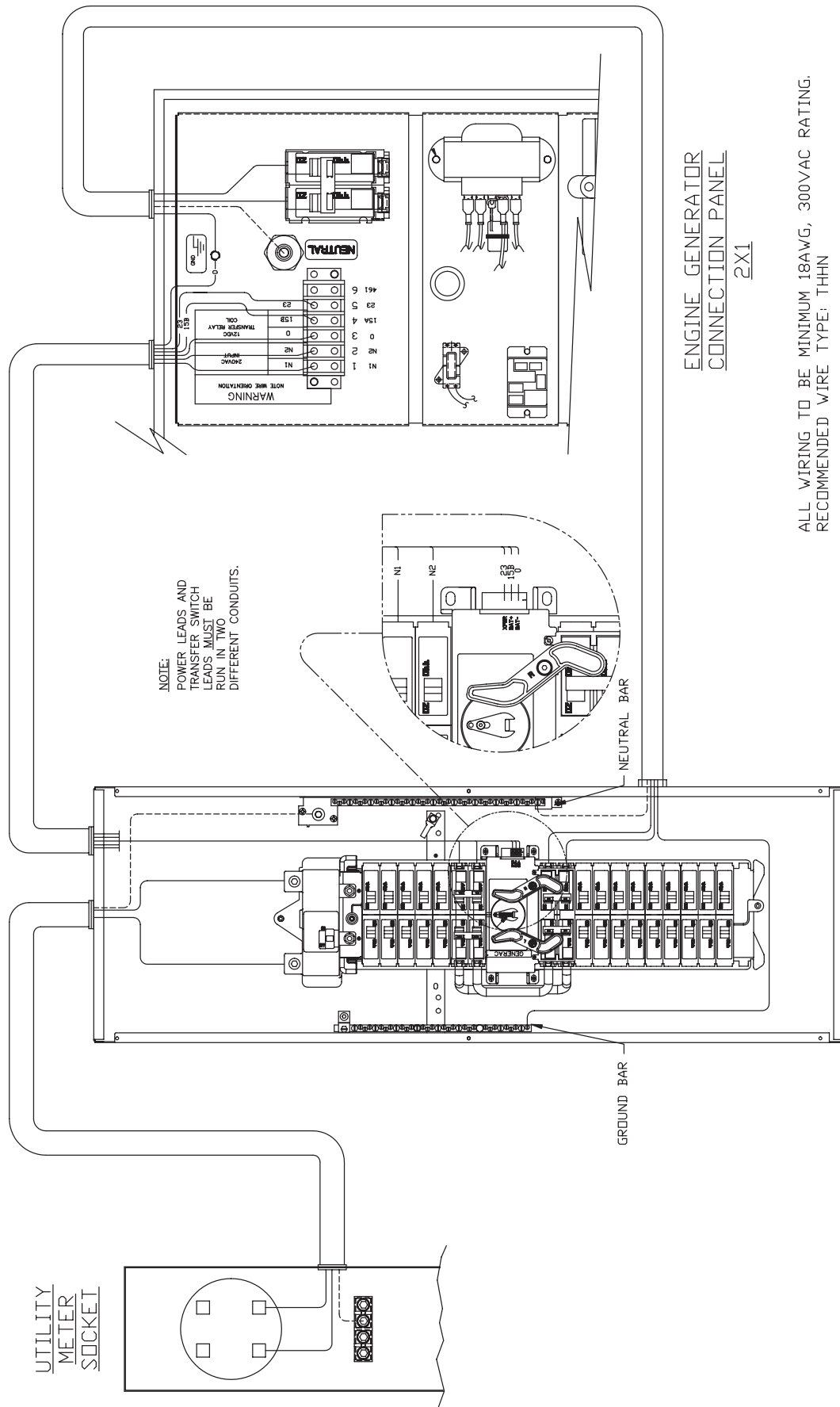
NOTE: INSTALLATION TO BE DONE BY A
LICENSED ELECTRICIAN AND MUST
MEET ALL NATIONAL, STATE AND
LOCAL ELECTRICAL CODES.

POWER-READY
LOAD CENTER

PRODUCT USAGE: 2007 & EARLIER, HSB, ALL QT PRODUCT.

INTERCONNECTIONS

Power Ready Load Center and Transfer Switch



ENGINE GENERATOR
CONNECTION PANEL
2X1

POWER-READY
LOAD CENTER

ALL WIRING TO BE MINIMUM 18AWG, 300VAC RATING.
RECOMMENDED WIRE TYPE: THHN

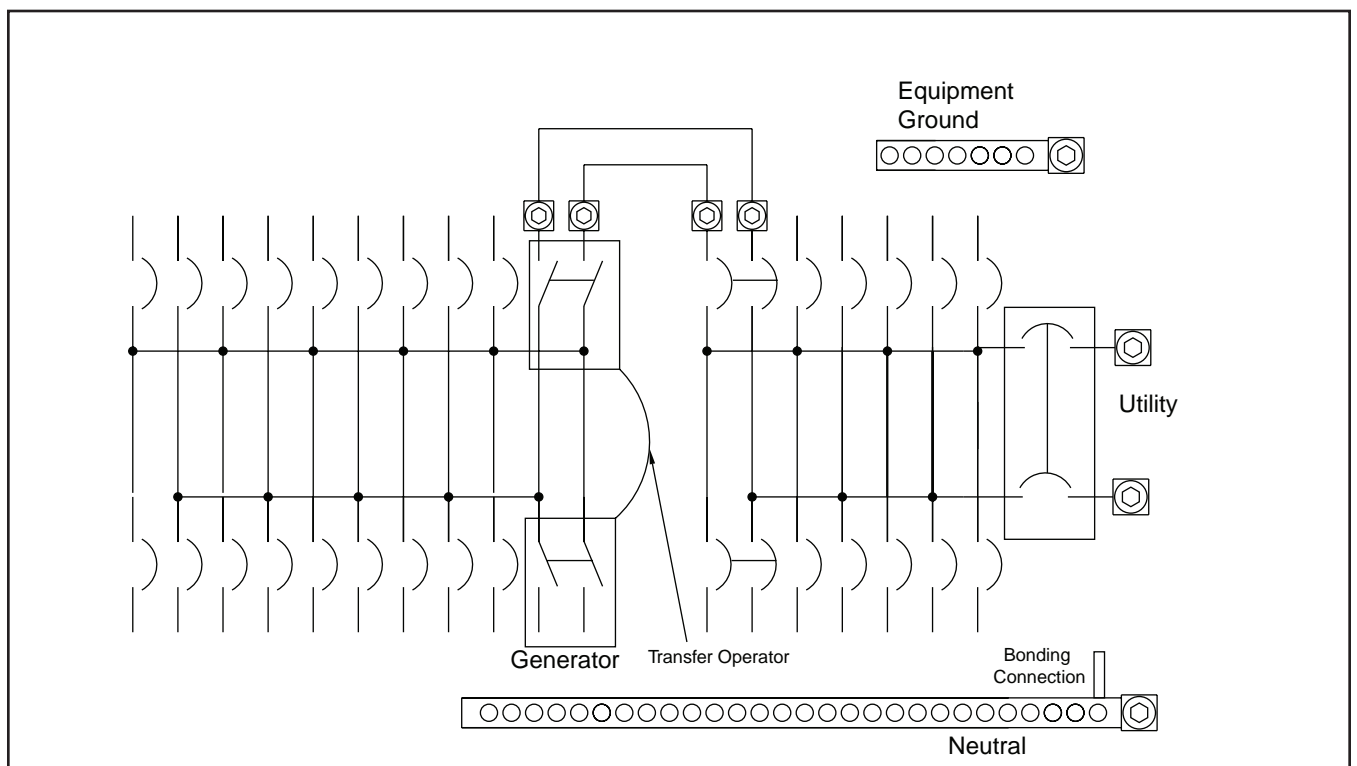
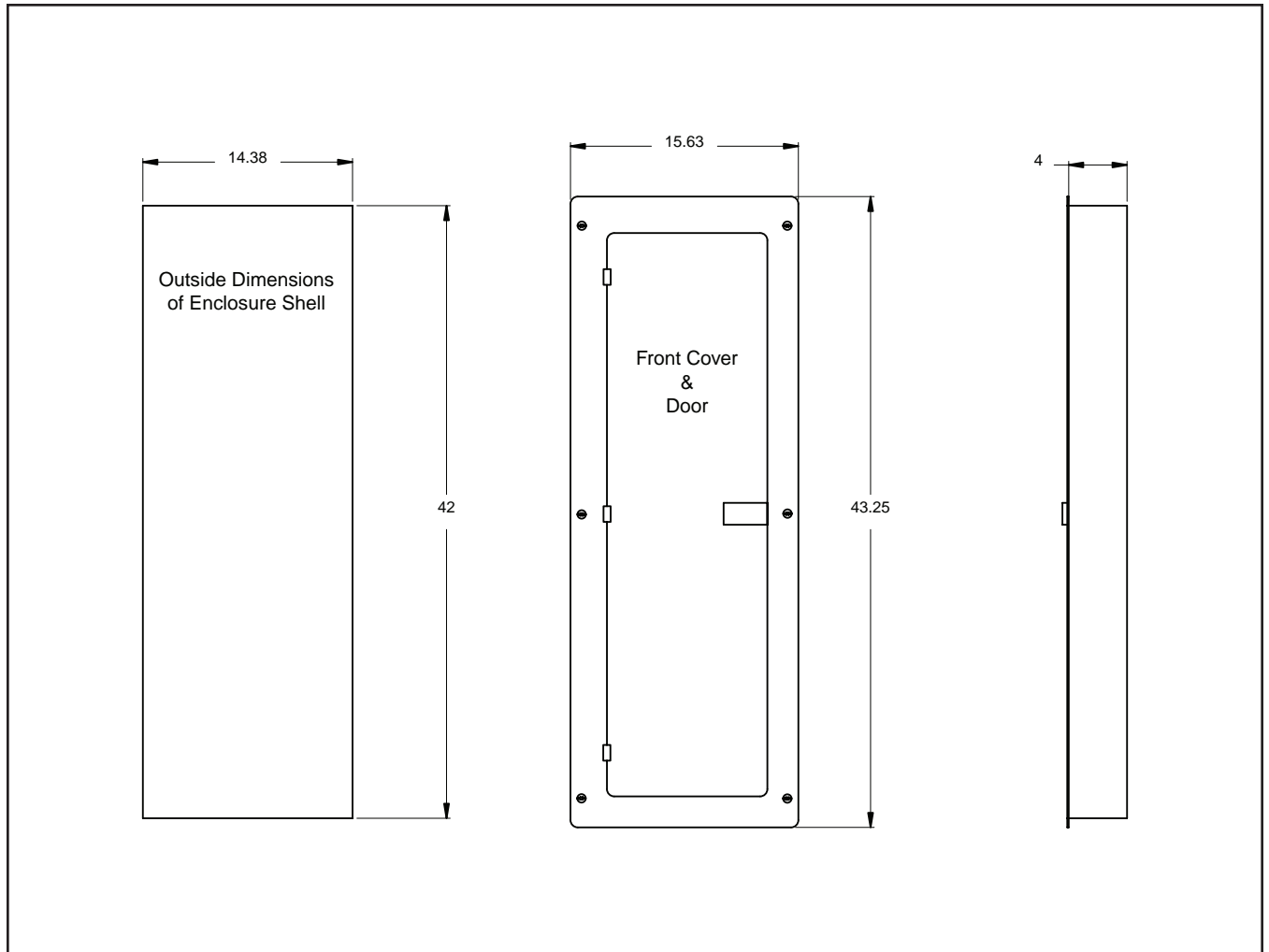
NOTE: INSTALLATION TO BE DONE BY A
LICENSED ELECTRICIAN AND MUST
MEET ALL NATIONAL, STATE AND
LOCAL ELECTRICAL CODES.

PRODUCT USAGE: 2008 & LATER, HSB.

SHEET 2 OF 2

UNIT DIMENSIONS

Power Ready Load Center and Transfer Switch



SPECIFICATIONS

Power Ready Load Center and Transfer Switch

Enclosure.....	NEMA Type 1, general purpose, painted metal
Main Breaker	200 Amp
Generator Switch	125 Amp
Main breaker wire size	# 1 to 300 mcm Cu-Al
Generator switch wire size	# 2 to 1/0 Cu, 1/0-2/0 Al
Neutral Lug.....	# 6 to 300 mcm
Ground Lug	# 14- 2/0
Ground Fault or Arc Fault Circuit Breaker	QPF or QAF Siemens
Maximum number of circuits (standard 1" breakers / tandem 1/2" breakers)	
Protected circuits.....	18/30
Non-protected circuits	10/NA
Total circuits	28/40
Withstand rating Main bus (amps)	22,000
Meets NEC wire bending space.....	Yes
UL listed	Yes
Seismically qualified to meet UBC code	Yes
Weight – PowerReady Basic w/o EZ transfer operator (PowerReady Advanced with EZ transfer operator)	45.5 lbs. (49 lbs.)
Operating temperature range	-20° F to 140° F

