

# VARITRAC® AND TRACKER



*As a complement to the Rooftop range, TRANE also offers two accessories that quickly prove to be indispensable :*

*the VARITRAC® system which allows variable thermal needs to be regulated within several zones requiring air-conditioning*

*TRACKER, a system of microelectronic control and monitoring of the air conditioning system.*

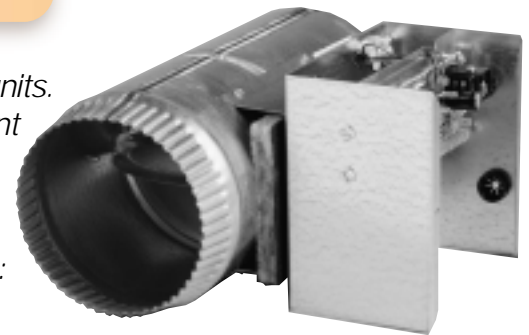


CCP2

## FOR WHOM? FOR WHAT?

*The VARITRAC® system is compatible with all types of Rooftop units. It allows individual comfort to be offered within zones with different thermal needs using one centralised Rooftop unit.*

*For the ultimate system control, TRACKER allows supervision of installation and controls additional devices of the building, such as : lights, signs, fans etc..., from a single location.*



VADA ROUND  
VARITRAC® DAMPER

## TRANE'S ADVICE

*The combination of a rooftop unit + Varitrac® + Tracker offers a complete solution, a true system offer for the overall management of a building.*

*This system can be used on new buildings or can be retrofitted on existing structures.*



TRACKER

## LIGHT COMMERCIAL RANGE

# TRACKER



## Simple but Sophisticated Control

Tracker provides scheduling, monitoring, and timed override capabilities, as well as local and unit auto dial-out indication of alarms. Operator interface is simple and user-friendly with icons on the touch-screen display or through a computer using Tracker PC software (ICS)

## Trane Control Feature

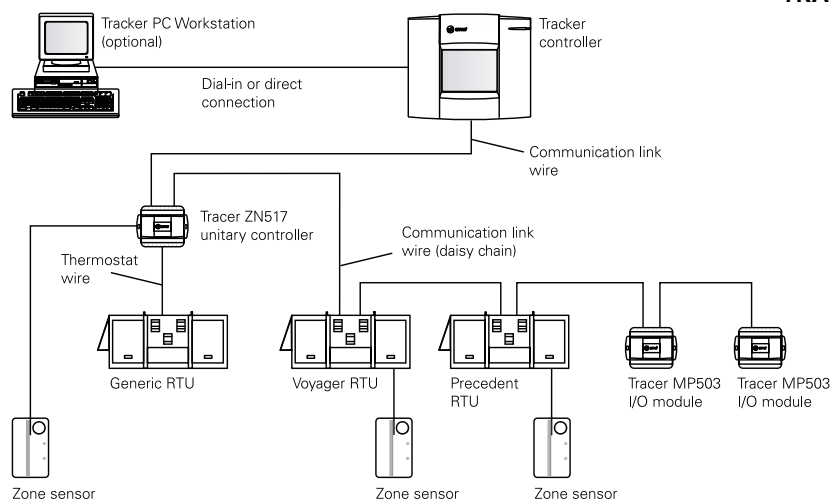
- **Simple** wiring and installation
- **Superior** automatic temperature control
- **Ventilation** control
- **Inexpensive**, easy-to-use sensors

The **touch screen display** provides all functionality and status of the building.

- **Reliable** electronics retain programming through power outages . . . no batteries to change.
- **Optional personal computer software** enables advanced features.



TRACKER



BAS	Model	Voyager rooftop and Precedent RTUs (SCC devices) with LonTalk communication interface (LCI) cards	Tracer ZN517 (SCC device) unitary controller	New VariTrac CCP	Tracer MP503 I/O controller		Voyager RTU with Trane Communication interface (TCI)	Thermosata Control Module (TCM)	VariTrac II CCP	Maximum Devices (See notes 1 and 2)
New Tracker (with touch screen)	12	12	12	5	4	0	0	0	0	21
	24	24	24	10	4	0	0	0	0	38
	24i (CE)	24	24	10	4	0	0	0	0	38

## Features

The Tracker BAS offers the installer and operator features that ensure its ease of use.

### Tracker BAS features

Both the controller and the PC software of the Tracker BAS offer these features:

- Intuitive, menu-driven user interface
- 365-day scheduling and 10 schedules
- Capability of including all equipment and devices in one schedule
- Temporary schedule override
- Easy-to-administer security system with two levels of access
- Automatic daylight savings time changeover
- Error and alarm messaging
- Setpoint viewing and editing

### Features exclusive to the controller

Several features of the Tracker BAS are exclusive to the controller:

- Auto-configuration
- Pager notification for error and alarm messages
- LCD touch screen

### Features exclusive to the PC software

The optional Tracker PC software offers all the features of the Tracker controller and the following features that are not available at the controller:

- Dial-in connection
- Backup and restore capability
- Standard graphics and HTML graphical interface
- Binary output programming capability
- Operator-defined custom alarms capability
- Printer support

Note: The Tracker PC software is not needed to set up and operate a typical building.

## LIGHT COMMERCIAL RANGE